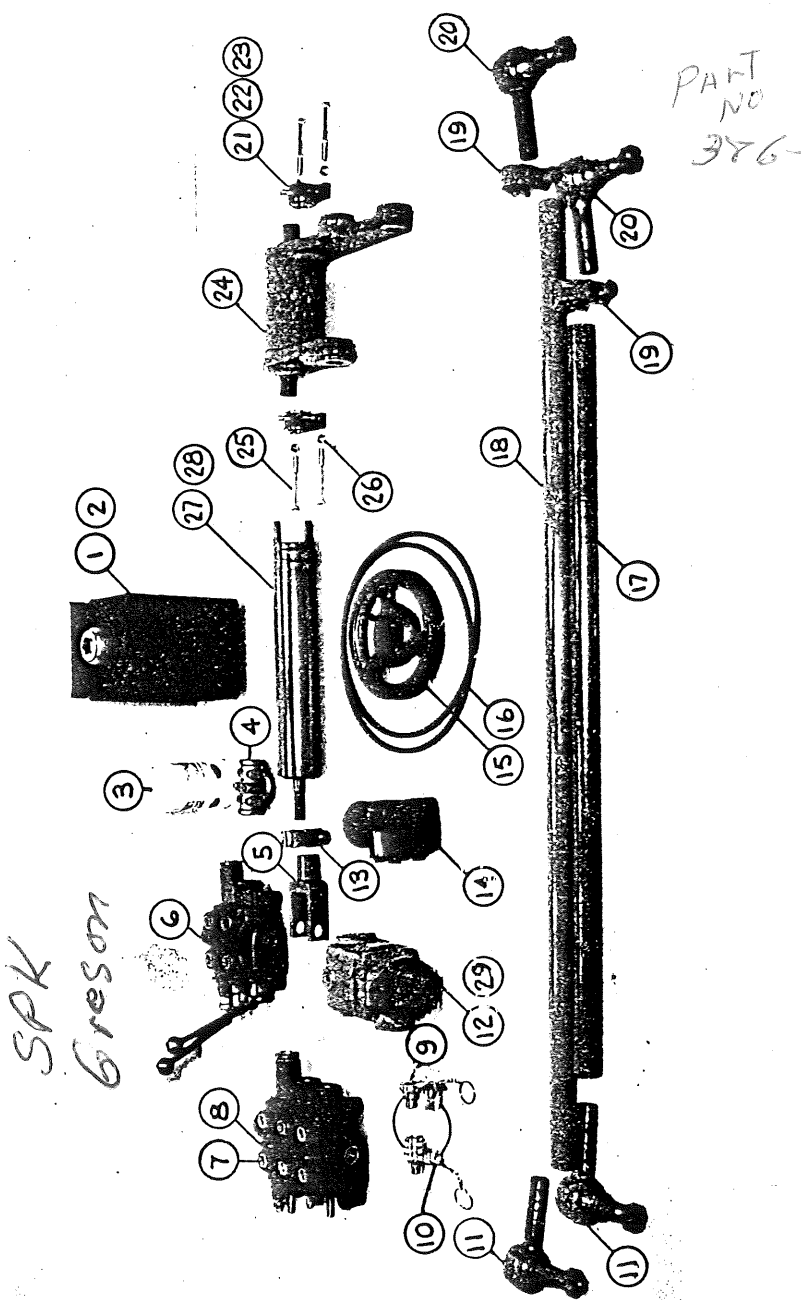


HYDRAULIC & STEERING SYSTEM COMPONENTS



APPLICABLE FOR STANDARD AND MID-ENGINE MODELS UNLESS NOTED

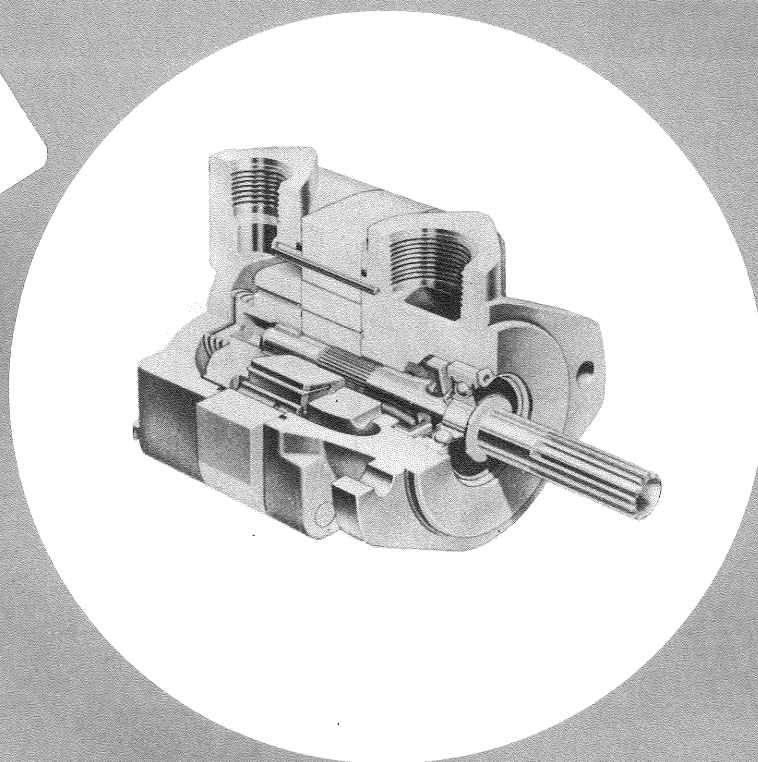
ITEM	NOMENCLATURE	1300	1500	1600	1700	2700	ITEM
1.	HYD. TANK-1½ GAL	131640-1	151640-1	161640-1	171640-1	271640-1	1.
2.	HYD. TANK-3 GAL	131641-1	151641-1	161641-1	171641-1	271641-1	2.
3.	FILTER ELEMENT	131642-1	151642-1	161642-1	171642-1	271642-1	3.
4.	FILTER MOUNT & FILTER	131642-2	151642-2	161642-2	171642-2	271642-2	4.
5.	CLEVIS	131287-1	151287-1	161287-1	171401-1	271401-1	5.
6.	TWO SPOOL VALVE	131644-1	151644-1	161644-1	171644-1	271644-1	6.
7.	THREE SPOOL VALVE	131644-2	151644-2	161644-2	171644-2	271644-2	7.
8.	T-HANDLE VALVE	131644-2	151644-2	161644-2	171644-2	271644-2	8.
9.	QUICK CONNECT FTG ASSY (Set)	131645-1	151645-1	161645-1	171645-1	271645-1	9.
10a.	QUICK CONNECT FTG-CAP	131645-2	151645-2	161645-2	171645-2	271645-2	10a.
10b.	QUICK CONNECT FTG-PLUG	131645-3	151645-3	161645-3	171645-3	271645-3	10b.
11.	TIE ROD END, RH	131646-1	151646-1	161646-1	171646-3	271646-3	11.
12.	HYDRAULIC PUMP	131643-2	151643-2	161643-2	171643-2	271643-2	12.
13.	BOOSTER CYLINDER CLAMP	131647-2	151647-2	161647-2	171647-2	271647-2	13.
14.	ORBITROL STEERING UNIT	131648-1	151648-1	161648-1	171648-1	271648-1	14.
15.	PUMP PULLEY (a)	131649	151649	161649	171649	271649	15.
16.	PUMP BELTS (b)						16.
17a.	TIE ROD-REAR (Std Cab)	131560-2	151560-2	161560-2	171659-2	271659-2	17a.
17b.	TIE ROD-REAR (Mid-Eng)	131689-1	151689-1	161689-1	171543-1	271543-1	17b.
18a.	TIE ROD-FRONT (Std Cab)	131560-1	151560-1	161560-1	171659-1	271659-1	18a.
18b.	(Cummins 378 Eng Inst'l) TIE ROD-FRONT (Mid-Eng)	131495-2	151495-2	161792-1	171902-1	271902-1	18b.
19.	TIE ROD CLAMP	131647-2	151647-2	161647-2	171647-1	271647-1	19.
20.	TIE ROD END, LH	131646-2	151646-2	161646-2	171646-4	271646-4	20.
21.	SWING MOUNT (Includes Brg)	131447-1	151447-1	161447-1	171321-2	271321-2	21.
22.	SWING MOUNT W/O BRG	131447-2&3	151447-2&3	161447-2&3	171321-1	271321-1	22.
23.	BEARING ONLY-SWING	131290-1	151290-1	161290-1	17293-23	27293-23	23.
24a.	STEERING SWING (Std Cab)	131206-1	151206-1	161206-1	171402-1	271402-1	24a.
24b.	STEERING SWING (Mid-Eng)	131206-1	151206-1	161206-1	171536-1	271536-1	24b.
25.	BOLT-SWING MOUNT, HEX HD-GR 5	½-13 x 2	½-13 x 2	½-13 x 2	5/8-18 x 6	5/8-18 x 6	25.
26.	LOCK NUT				5/8-18 Nylon	5/8-18 Nylon	26.
27.	HYD. STEERING CYLINDER	131650-1	151650-1	161650-1	171650-3	271650-3	27.
28.	STEERING CYL. REPAIR KIT (c)	131650-4	151650-4	161650-4	171650-6	271650-6	28.
29.	ORBITROL REPAIR KIT	131648-2	151648-2	161648-2	171648-2	271648-2	29.

(a) Specify Outside Diameter (b) Please Furnish No. From Belt When Ordering
(c) Specify Cyl. Size & Manf. (Garrison 2896, 2897, 2897, T-J)

FOR 2500 PRICES, USE 1500 LISTINGS
SPECIFY YEAR, MODEL AND SERIAL NUMBER WHEN ORDERING PARTS



DISTRIBUTED BY
DUPAR DYNAMICS
1010 OBIE ST. - P.O. BOX 2497
EUGENE, OREGON 97402



**VANE
PUMPS**

SERVICE PARTS INFORMATION

**V20, V20F & V20P SERIES
-11 DESIGN**

SPERRY VICKERS
TROY, MI. 48084

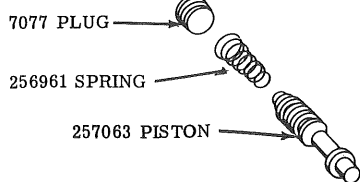
Revised 8-1-74

M-2004-S

MODEL CODE

V VANE PUMP 20 SERIES DESIGNATION * INTEGRAL VALVE OPTIONS * MOUNTING 1 = 2 BOLT 2 = FOOT * INLET PORT CONNECTIONS * RING CAPACITY 13 = 13 GPM * OUTLET PORT CONNECTIONS * SHAFT TYPE * COVER POSITION * FLOW RATE 2 = 2 GPM ETC. * RELIEF VALVE SETTING (P. S. I.) 11 DESIGN L LEFT HAND ROTATION *** SPECIAL FEATURES

V20P - **** - **** - 11
PRIORITY VALVE COVER

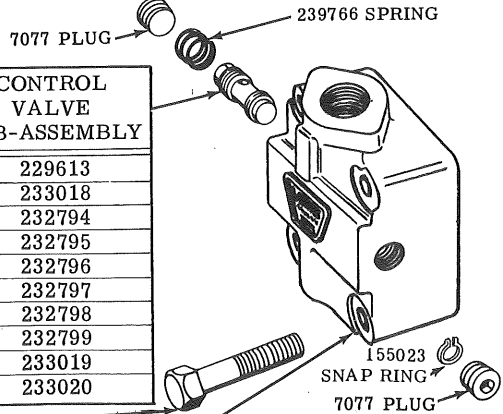


COVER	MODEL DESIGNATION
308121	V20P-***T-***2*11
308122	V20P-***T-***2.5*11
308123	V20P-***T-***3*11
308124	V20P-***T-***4*11
359314	V20P-***T-***5*11
308125	V20P-***T-***6*11
308126	V20P-***T-***8*11

MODEL DESIGNATION	SCREW (4 REQ'D) TORQUE TO 80 ± 5 FT. LBS.
V20P-** 6*-****11	11165
V20P-** 7*-****11	
V20P-** 8*-****11	9431
V20P-** 9*-****11	
V20P-***11*-****11	
V20P-***12*-****11	96168
V20P-***13*-****11	

MODEL DESIGNATION	PRESSURE SETTING (P. S. I.)	SPRING
V20P-****-***A11	250	252886
V20P-****-***B11	500	
V20P-****-***C11	750	2280
V20P-****-***D11	1000	
V20P-****-***E11	1250	2282
V20P-****-***F11	1500	
V20P-****-***G11	1750	
V20P-****-***H11	2000	2281
V20P-****-***J11	2250	
V20P-****-***K11	2500	

V20F - **** - **** - 11
FLOW CONTROL COVER



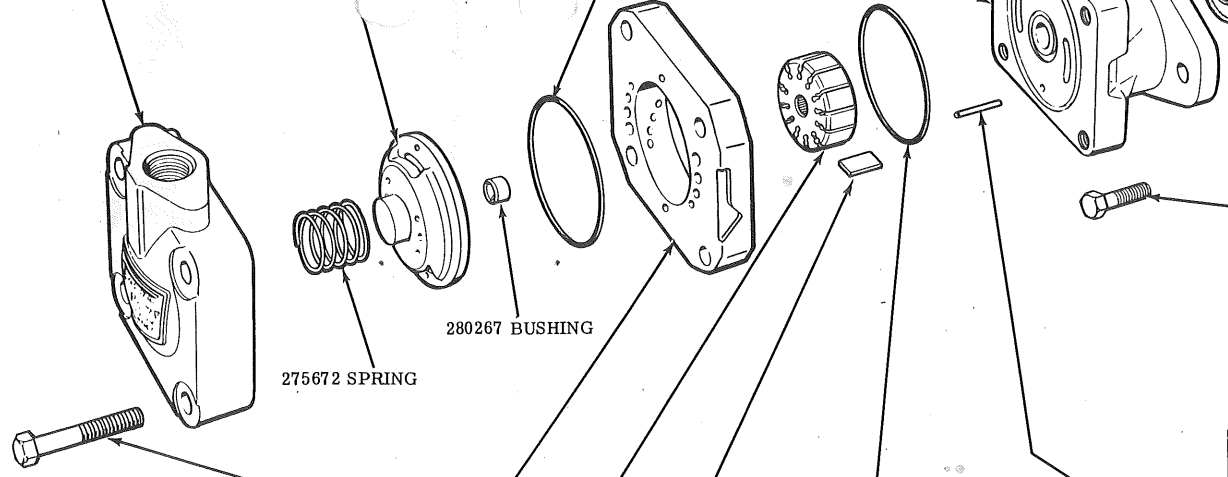
MODEL DESIGNATION	PRESSURE SETTING (P. S. I.)	CONTROL VALVE SUB-ASSEMBLY
V20F-****-***A11	250	229613
V20F-****-***B11	500	233018
V20F-****-***C11	750	232794
V20F-****-***D11	1000	232795
V20F-****-***E11	1250	232796
V20F-****-***F11	1500	232797
V20F-****-***G11	1750	232798
V20F-****-***H11	2000	232799
V20F-****-***J11	2250	233019
V20F-****-***K11	2500	233020

MODEL DESIGNATION	SCREW (4 REQ'D) TORQUE TO 80 ± 5 FT. LBS.
V20F-** 6*-****11	11164
V20F-** 7*-****11	
V20F-** 8*-****11	9431
V20F-** 9*-****11	
V20F-***11*-****11	
V20F-***12*-****11	96168
V20F-***13*-****11	

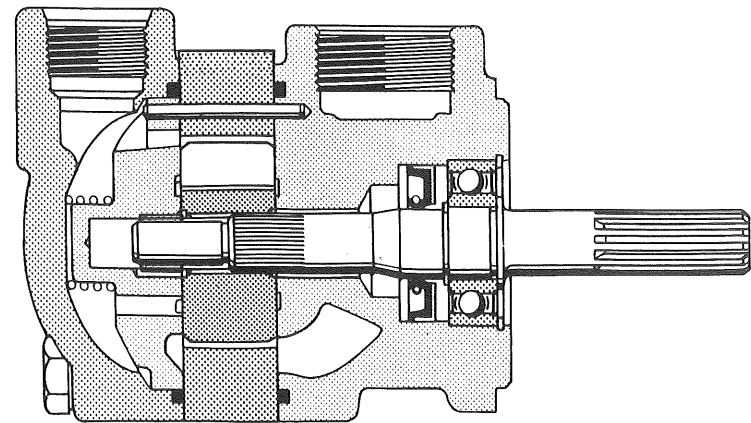
COVER	MODEL DESIGNATION
316090	V20F-***P-*** 2*11
316093	V20F-***P-*** 4*11
309151	V20F-***P-*** 5*11
310971	V20F-***P-*** 6*11
316094	V20F-***P-*** 8*11
316095	V20F-***P-***10*11
306313	V20F-***S-*** 2*11
306915	V20F-***S-*** 4*11
363243	V20F-***S-*** 5*11
306917	V20F-***S-*** 6*11
306919	V20F-***S-*** 8*11
306921	V20F-***S-***10*11
306314	V20F-***T-*** 2*11
306346	V20F-***T-*** 4*11
306819	V20F-***T-*** 6*11
306821	V20F-***T-*** 8*11
306823	V20F-***T-***10*11

COVER	MODEL DESIGNATION
280690	V20-***F-***11
313657	V20-***P-***11
281145	V20-***R-***11
293373	V20-***S-***11
291045	V20-***Y-***11

359287 PRESSURE PLATE
SUB-ASSEMBLY
(INCLUDES 280267
BUSHING)



MODEL DESIGNATION	SCREW (4 REQ'D) TORQUE TO 80 ± 5 FT. LBS.	RING	ROTOR	VANE KIT (12 VANES)	"O" RING (2 REQ'D)	CARTRIDGE KIT	PIN (2 REQ'D)
V20-*** 6*-****11	131485	328150	358328	923485		923480	2161
V20-*** 7*-****11		328152	358330			923481	
V20-*** 8*-****11		331791	358330	923493		923483	2478
V20-*** 9*-****11	131486	331789				923484	
V20-***11*-****11		328156	358332	923478	154090	923482	16662
V20-***12*-****11		331806	358334	923479		923486	
V20-***13*-****11	1319	331807	358334	923479		923487	9603



ASSEMBLY VIEW

SPARE PARTS STOCK RECOMMENDATIONS (FOR EACH 100 UNITS IN OPERATION)

V 20 * - * * * * * * * 11 L - ***

PART NUMBER	NAME	INTEGRAL VALVE OPTIONS	MOUNTING	INLET PORT CONNECTIONS	RING CAPACITY	OUTLET PORT CONNECTIONS	SHAFT TYPE	COVER POSITION	FLOW RATE (G.P.M.)	RELIEF VALVE SETTING	DESIGN	LEFT HAND ROTATION	SPECIAL FEATURES	QUANTITY PER UNIT	QUANTITY RECOMMENDED FOR STOCK
SEE PAGE 1	SCREW	P, F												4	10
SEE PAGE 1	COVER	P, F				PR,ST			2, 4, 6, 8					1	5
7077	PLUG	P, F												2	5
7075	PLUG	P												1	5
373117	SHIM	P												1	10
373118	SHIM	P												1	10
SEE PAGE 1	SPRING	P								C.D.E.F. G.H.J.K.				1	10
82800	POPPET	P												1	10
2706	SEAT	P												1	10
256961	SPRING	P												1	10
257063	PISTON	P												1	10
155023	SNAP RING	F												1	5
239766	SPRING	F												1	10
SEE PAGE 1	CONTROL VALVE SUB. ASSY.	F								C.D.E.F. G.H.J.K.				1	10
275672	SPRING													1	10
359287	PRESSURE PLATE SUB. ASSY.													1	5
280267	BUSHING													1	15
SEE PAGE 1	RING				6, 7, 8, 9, 11, 12, 13									● 1	15
SEE PAGE 1	ROTOR													● 1	15
SEE PAGE 1	VANE KIT													● 1	15
923480	CARTRIDGE KIT				6									1	15
923481	CARTRIDGE KIT				7									1	15
923483	CARTRIDGE KIT				8									1	15
923484	CARTRIDGE KIT				9									1	15
923482	CARTRIDGE KIT				11									1	15
923486	CARTRIDGE KIT				12									1	15
923487	CARTRIDGE KIT				13									1	15
SEE PAGE 2	PIN				6, 8, 9, 11, 13									2	15
280689	BODY			P										1	5
297228	BODY			S										1	5
98653	SNAP RING													1	7
98574	BEARING													1	7
SEE PAGE 2	SHAFT						1, 3, 11							1	7
5881	KEY						1							1	7
1615	KEY						3							1	7
132260	NUT						3							1	7
109975	SNAP RING													1	10
1273	BOLT		2											2	5
126315	MOUNTING BRACKET		2											1	2
922733	SEAL KIT													1	15

● MAY BE PURCHASED IN CARTRIDGE KIT

To insure sustained efficiency and maximum trouble-free life of this precision equipment, initial and continuous filtration of the fluid medium to 25 microns or less is essential. For information pertaining to Vickers economical 10 micron filters, see installation drawing M 229847.