



FOUR-ON-THE-SNOW Newsletter

A publication of Tucker Sno-Cat® Corporation
NO SNOW TOO DEEP

Made in the USA since 1942
NO ROAD TOO STEEP

April 2014 Volume 6 Issue 4

CALL US FOR A DEMONSTRATION GASSER PARTS TRAVEL THROUGH TIME WITH TUCKER STERLING SAYS MEET JESSE HEPPNER

CALL US FOR A DEMONSTRATION

Just in case you did not know we spend a lot of time conducting demonstration throughout the West. Whether you are looking for mountain top access, trail or slope grooming, or soft ground application we would like to talk to you about a demonstration. call us at 541-779-3731.



Page 1 of 5

Tucker Sno-Cat® Corporation
2872 S. Pacific Hwy
Medford, OR 97501

BUY AMERICAN

BUY ORANGE

www.sno-cat.com
(541) 779-3731
Toll Free (866) 766-2281

Demos For Sale

If you are interested in purchasing a demonstrator please contact our sales department. We manufacture demo units for both testing and demonstrations. Purchasing a demonstrator can be beneficial. We sell our demonstrators at a discounted price yet still offer the factory warranty. Currently we have the following demo's available for immediate delivery!



**2014 2000BXL Tier 4i
26" All Rubber Tundra Tracks
AVAILABLE LATE APRIL 2014**

(2 Each)



**2013 2000E Tier 4i 5-Pass
12-Way Blade & Tiller
38" Tucker Rubber Bar Tracks
AVAILABLE APRIL 2014**



**2013 1642E Tier 4i AG
Farm Fenders & Cat Walks
26" All Rubber Tundra Tracks
AVAILABLE APRIL 2014**

GASSER PARTS

We have several parts left from the gasoline engine days, pictured below is a sampling. These parts most likely fit the Chrysler 318 and 360 Industrial V-8 engines used in the 70's and 80's. If you are interested in purchasing any of these please call or email Justin in our Parts Department. (Justin@sno-cat.com)



Delco Remy 105A Alternator



Chrysler Starter #53005984



2 Barrel Carburetors, Large Holly and Regular Size Carter



Mopar Fuel Pump #4293805



Mopar Oil Pump w/Sump

TRAVEL THROUGH TIME WITH TUCKER

Pictured below is the Bell Telephone Company picking up a new Model 443 Tucker Sno-Cat® with their new transport truck. It is the 1950s and if you had a telephone or talked on one it was most likely owned by the them. It was also before the time when most lines were buried, so in the snow zone there was a lot of need for Tucker Sno-Cat® vehicles. Bell Telephone had a standard for this transport truck and as you can see it was an innovative way to lower the center of gravity and secure the load. Check out the old style turn signal indicator mounted on the rear of the truck roof.



STERLING SAYS.....

This month Sterling talks about: Basic protection from UV and corrosion, old hoses, and leaf springs.

"If your Sno-Cat® is stored outside UV will be working on it all the time. 1. Cover the tracks. 2. Cover the windshield. 3. A basic waxing will help protect the paint job.

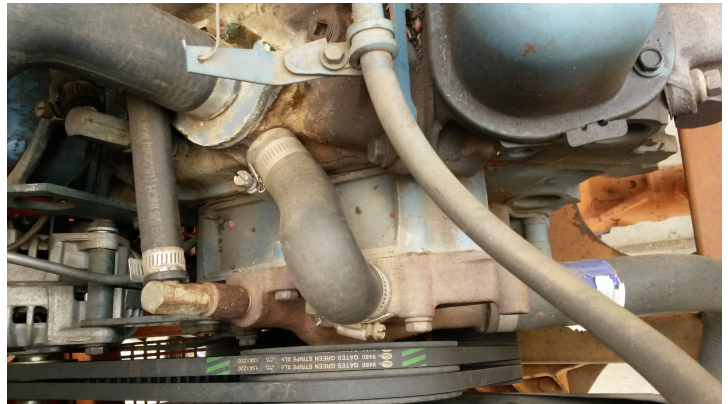
If you transport the machine in an area that uses deicer on the roads then wash it off as soon as you can because it will eat into the paint and chrome.

Check to make sure your leaf springs have the correct amount of curl, flat springs will change the pinion angle.

Check the condition of fuel hoses to make sure they are not weather checked, on older machines UV can be damaging on both the hose and the loom sleeve that protects them. Coolant hoses connected to the radiator also need periodic inspection to make sure they are still flexible."



Fuel hoses on an older Sno-Cat®



Coolant hoses on an older Sno-Cat®

MEET JESSE HEPPNER



Jesse came to work for Tucker Sno-Cat® Corporation in November of 2006, he was hired to assist in the Paint Department. During his senior year at high school Jesse signed up for the Auto Body Class, where he learned the basics of body repair and painting. After high school he worked two years for an auto body repair shop and then four years for a large tool box and custom tow bed manufacturer, further honing his skills as a painter. Currently Jesse is in charge of the Paint Department and has seen several changes since 2006, some from new regulations and some from changing the preparation process which has resulted in quicker turn times.

Jesse is a Southern Oregon Native, growing up in the Eagle Point area. He is married and he and his wife are very busy with four children, all under eleven. In addition to helping with the kids (three are in sports), Jesse also enjoys hunting and camping.